



mico

PHILOSOPHY

MICO represents an innovative and contemporary outlook on the original textile production, initiated in the 1960s, of the company that would eventually become the Mico Group. MICO has carried out a respectful revision of traditions and manual work, leading the extraordinary evolution of crafts worldwide. This process has materialized over time into a series of collections of great value in terms of design, research, development, and even business ethics. MICO rugs are handmade by expert artisans, using traditional techniques that have been renewed and updated thanks to the creativity of internationally renowned designers. Its application to modular structures and accessories, which allow the user to create complete spaces, has also given rise to new concepts of habitability in contemporary spaces.





SUSTAINABILITY

Manual manufacturing processes and the use of natural materials are two of the most distinctive features of MICO products. When making our products, we aim at minimizing our impact on the environment. This premise is applied starting with the initial design stages, to guarantee the desired results. When sourcing natural materials, such as wool, cotton, linen, silk or jute, we select those that have been obtained sustainably and locally, and we minimize the dyeing cycles as much as possible. At MICO, manufacturing processes are linked to essentially rural communities, and in this way, we support their social and economic development through activities that do not pollute. Starting this year, some of our collections are made with recycled PET threads. MICO supports the reduction of plastic use worldwide while providing a longer useful life for existing materials, preventing it from degrading the environment uncontrollably.

SOCIAL PROJECT

The artisanal manufacture of our collections is carried out in cooperation with various communities in India, with whom we maintain a consolidated social and development commitment. Our artisan teams are mostly female, and our goal is to help them achieve economic independence through stable and well-paid work. Designers working with MICO are encouraged to include embroidery, needlepoint or crochet in their collections so that this unit can keep growing. MICO collections thus benefit from the skills of these artisans and they, in return, receive a fair salary and gain decision power and independence.



INDEX

MICO

- 18. MICO LEATHER RUGS
- 23. MICO PEBBLE RUGS & POUFS
- 31. MICO GARDEN LAYERS
- 36. MICO HAND KNOTTED RUGS
- 40. MICO HAND TUFTED RUGS
- 42. MICO HIGH END RUGS
- 43. MICO EUROPE 1 RUGS
- 46. MICO EUROPE 2 RUGS
- 48. MICO EUROPE 3 EMBROIDERY RUGS
- 49. MICO OVER TUFTING RUGS
- 51. MICO INDOOR / OUTDOOR PET POLYESTER RUGS
- 52. MICO WOOL SHAGGY RUGS
- 53. MICO WOOL & VISCOSE RUGS
- 55. MICO VISCOSE PRINTING RUGS
- 57. MICO CUSHION EMBROIDERY
- 61. MICO POLYESTER RUGS
- 69. PROJECTS
- 72. CARE AND CLEANING

NEW COLLECTIONS





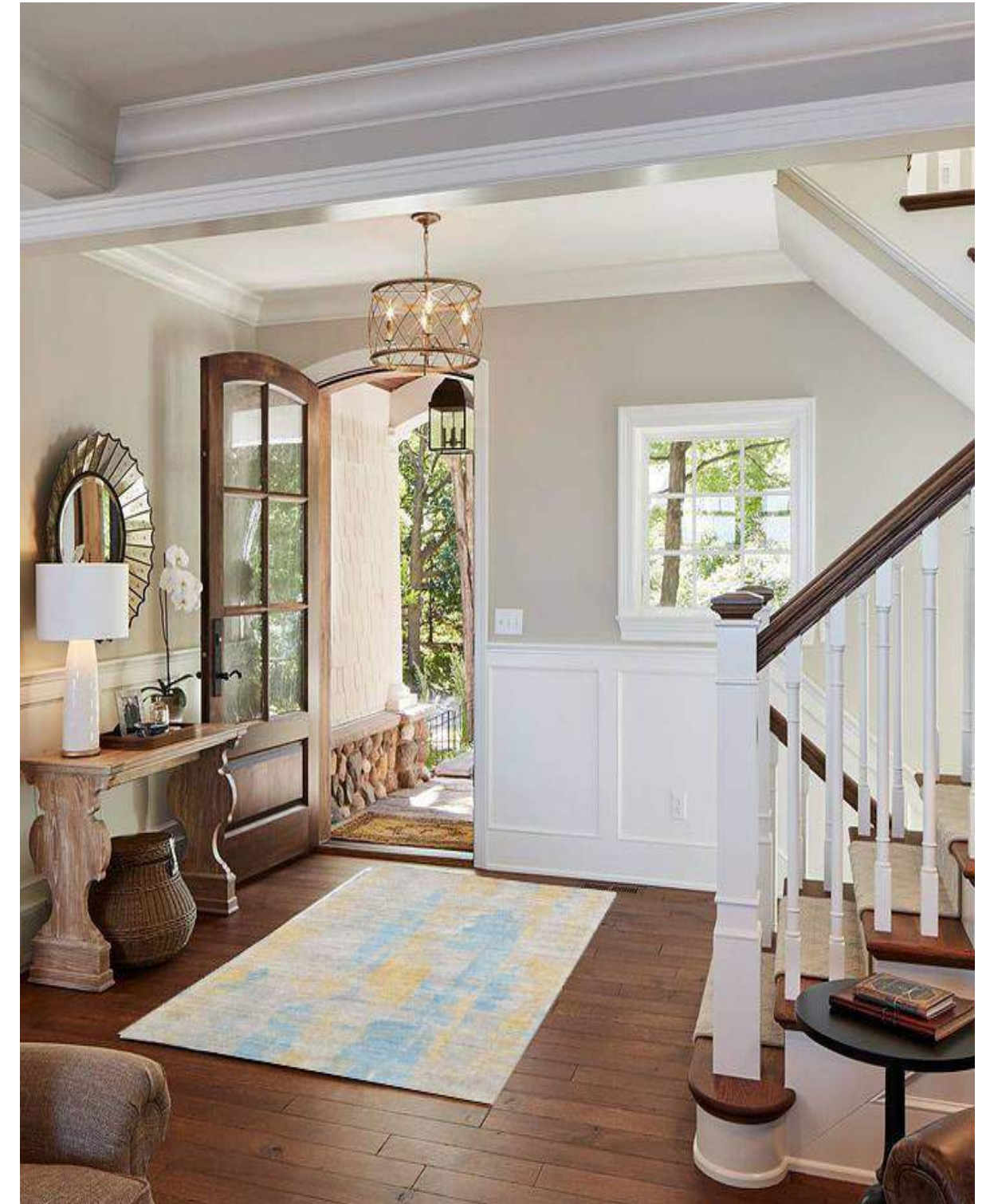


















MICO LEATHER RUGS

Painstakingly built collections based on innovative concepts and hand-crafted production methods. A range of fabulous designs which, starting with a rug, can be used to build up a whole family of mod-ules and accessories for any room. This is Mico leather Rugs : designs created for com-ing up with stimulating atmospheres with contemporary flair, in an open, flexible, informal layout.

Fibre composition: 80% Leather/20% Cotton

Dimensions: 150x200 cms / 4'11"x6'7"
160x230 cms / 5'3"x7'6"
170x240 cm / 5'7"x7'11"
200x300 cm / 6'7"x9'10"



MICO # 1



MICO # 2



MICO # 3



MICO # 4



MICO # 5



MICO # 6



MICO # 7



MICO # 8



MICO # 9



MICO # 10



MICO # 11



MICO # 12



MICO # 13



MICO # 14



MICO # 15



MICO # 16



MICO # 17



MICO # 18



MICO # 19



MICO # 20



MICO # 21



MICO # 22



MICO # 23



MICO # 24



MICO # 25



MICO # 26

MICO PEBBLE RUGS & POUFS

The desire to design a large volume rug that could combine various textures was the starting-point for this collection was inspired for this project by hand-knitted woollen jerseys, and the rounded shapes and elongated formats look very much like the knitting pattern for a sleeve. However, the great virtue of this collection lies in the complex method that had to be developed to actually produce the items. Four years of research were needed to come up with the tools and working system that would enable the complete pieces to be woven entirely on a hand loom, despite their changing textures, types of yarn, pattern direction and widths.

PEBBLE RUGS

Fibre composition: 100% FINE WOOL

Dimensions: 150x200 cms / 4'11"x6'7"

160x230 cms / 5'3"x7'6"

170x240 cm / 5'7"x7'11"

200x300 cm / 6'7"x9'10"

POUFS

Fibre composition: 100% COTTON/WOOL/LEATHER

Dimensions: 45X45X50 cm

50X50X45 cm

45X45X45 cm

35X35X50 cm

50X50X40 cm

55X55X45 cm

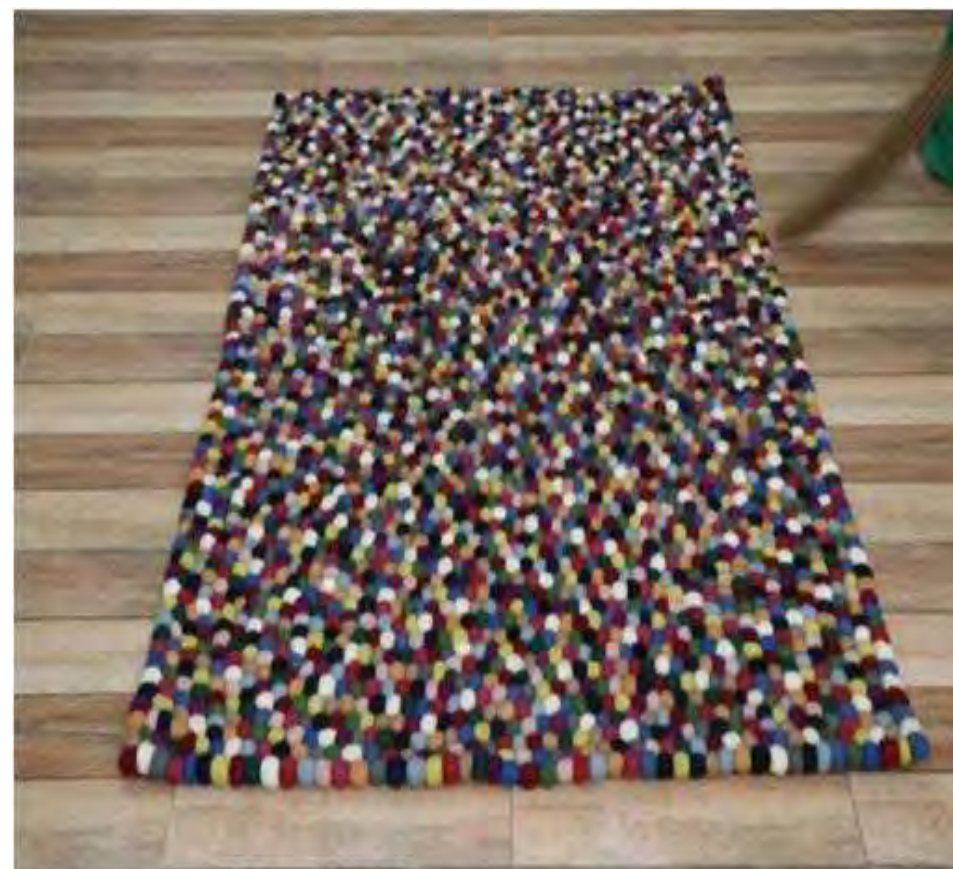
Any size possible as per your requirements



MICO # 27



MICO # 28



MICO # 29



MICO # 30



MICO # 31



MICO # 32



MICO # 33



MICO # 34



MICO # 35



MICO # 36



MICO # 37



MICO # 38



MICO # 39



MICO # 40



MICO # 41



MICO # 42



MICO # 43



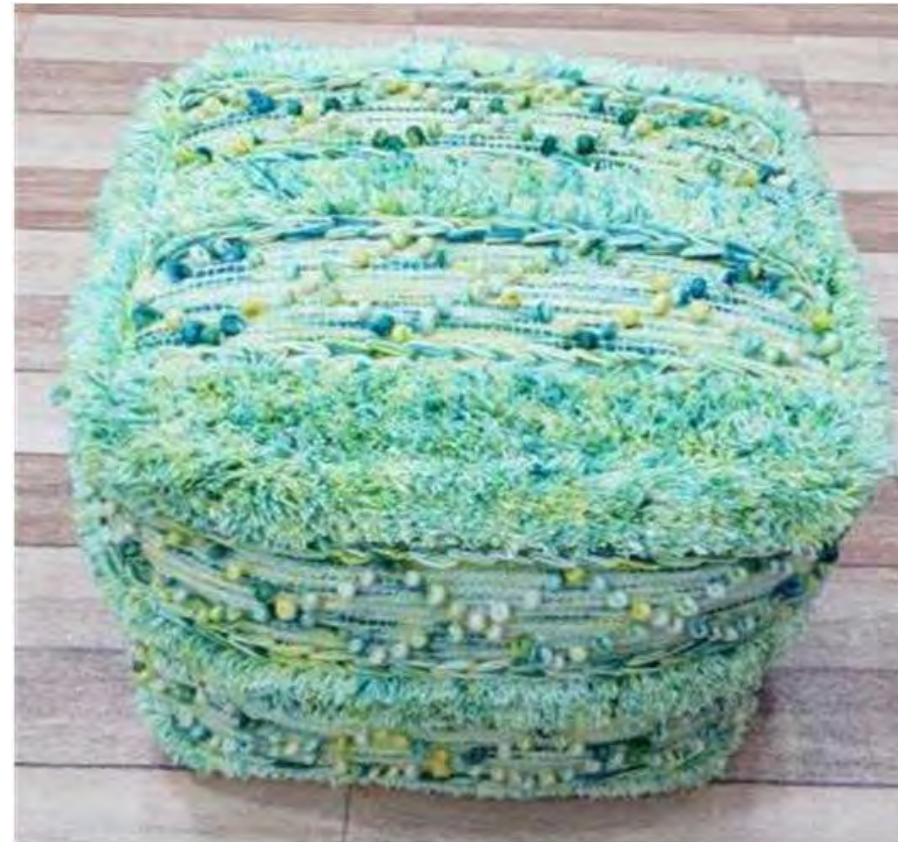
MICO # 44



MICO # 45



MICO # 46



MICO # 47



MICO # 48



MICO # 169



MICO # 170



MICO # 171



MICO # 172



MICO # 173



MICO # 174



MICO # 175



MICO # 176



MICO # 177



MICO # 178



MICO # 179



MICO # 180



MICO # 181



MICO # 182



MICO # 183



MICO # 184



MICO # 185



MICO # 186



MICO # 187



MICO # 188



MICO # 189

MICO GARDEN LAYERS

Architectures and customs from Mughal culture are the starting-point from which the design of the MICO Garden Layers collection emerges. This collection of furniture and outdoor items bear the unmistakable stamp of this kind of inspiration closely bonded with tradition. The collection includes rugs, mattresses, rolls, cushions, beds and side tables made with special outdoor materials, plus fabrics that also convey the warmth of an indoor space. Items for relaxed interiors with a clearly contemporary, universal look but also carefully thought out references to their origins.

Fibre composition: 100% POLYPROPYLENE

Dimensions: 150x200 cms / 4'11"x6'7"
160x230 cms / 5'3"x7'6"
170x240 cm / 5'7"x7'11"
200x300 cm / 6'7"x9'10"



MICO # 49



MICO # 50



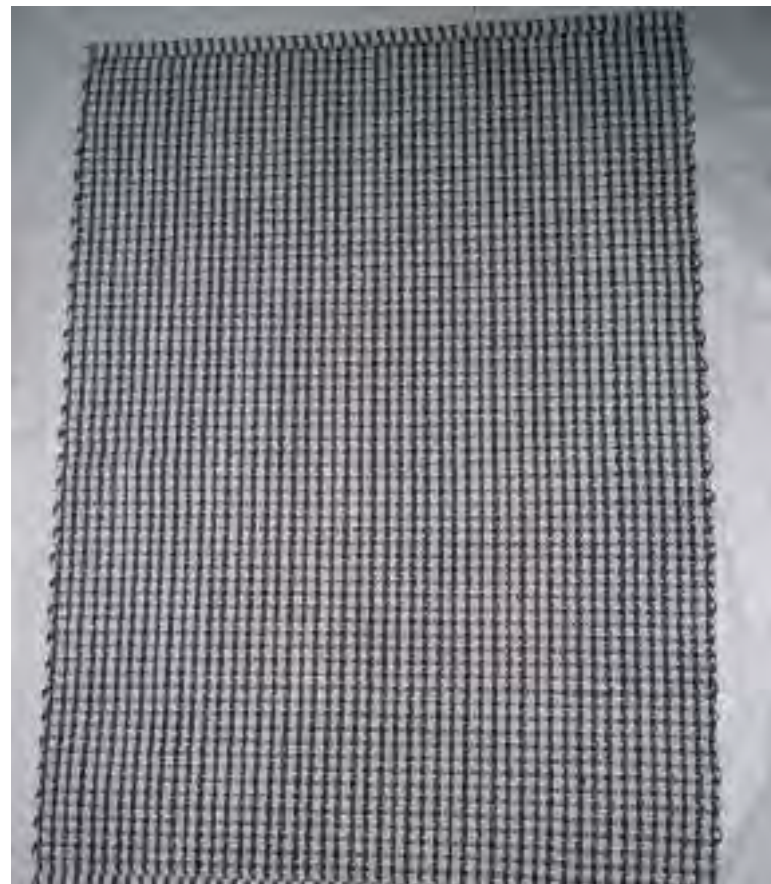
MICO # 51



MICO # 52



MICO # 53



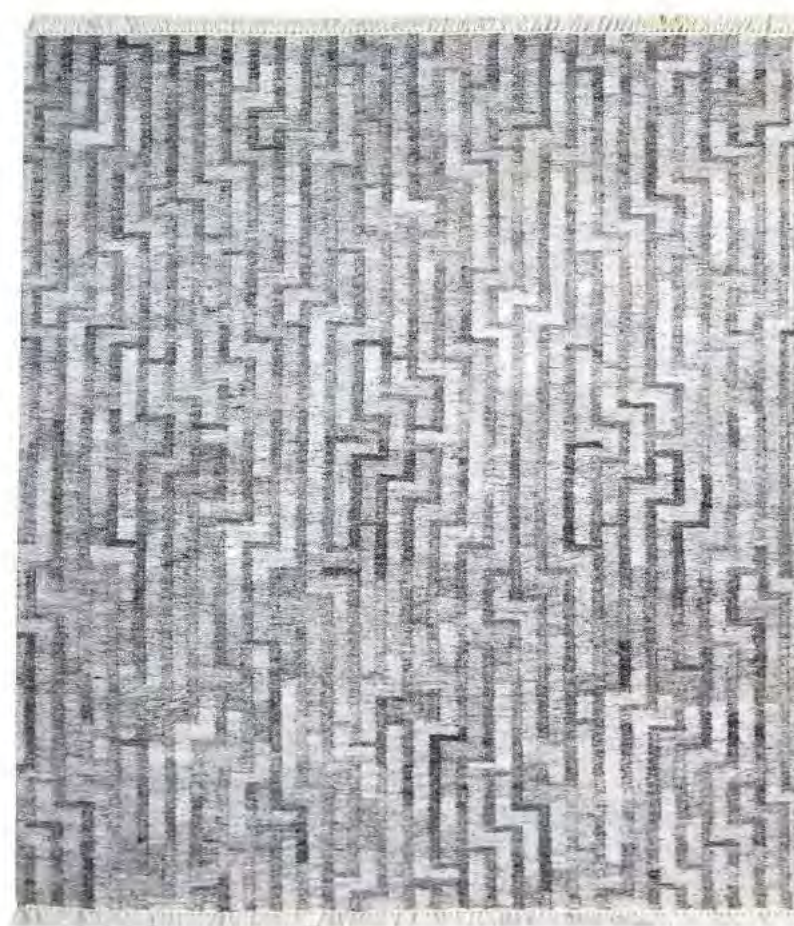
MICO # 54



MICO # 55



MICO # 56



MICO # 57



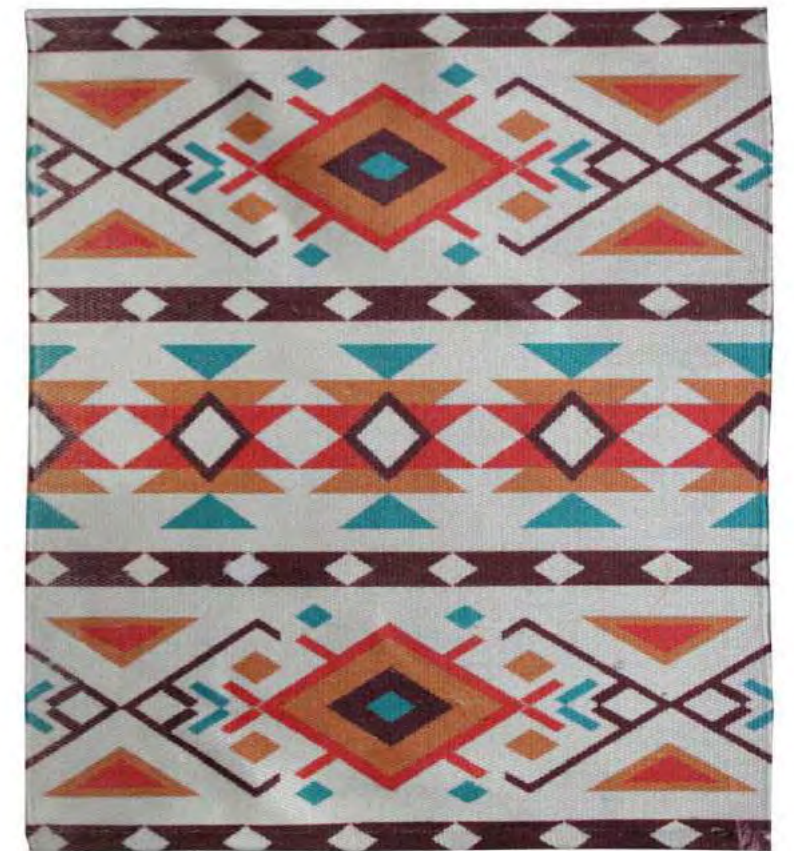
MICO # 58



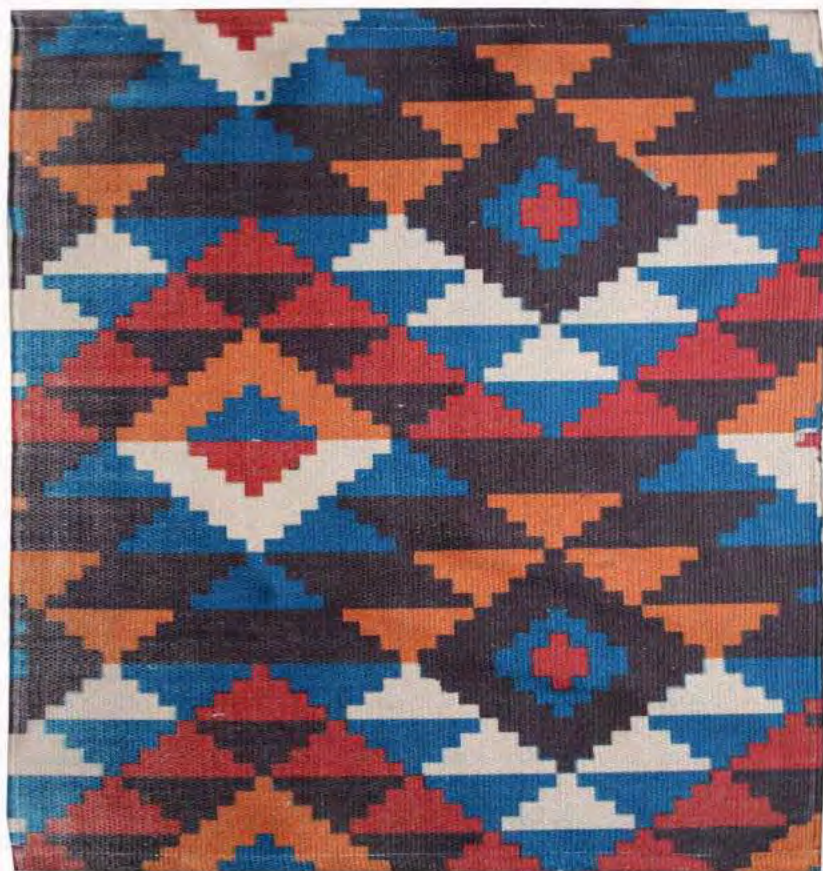
MICO # 59



MICO # 60



MICO # 61



MICO # 62



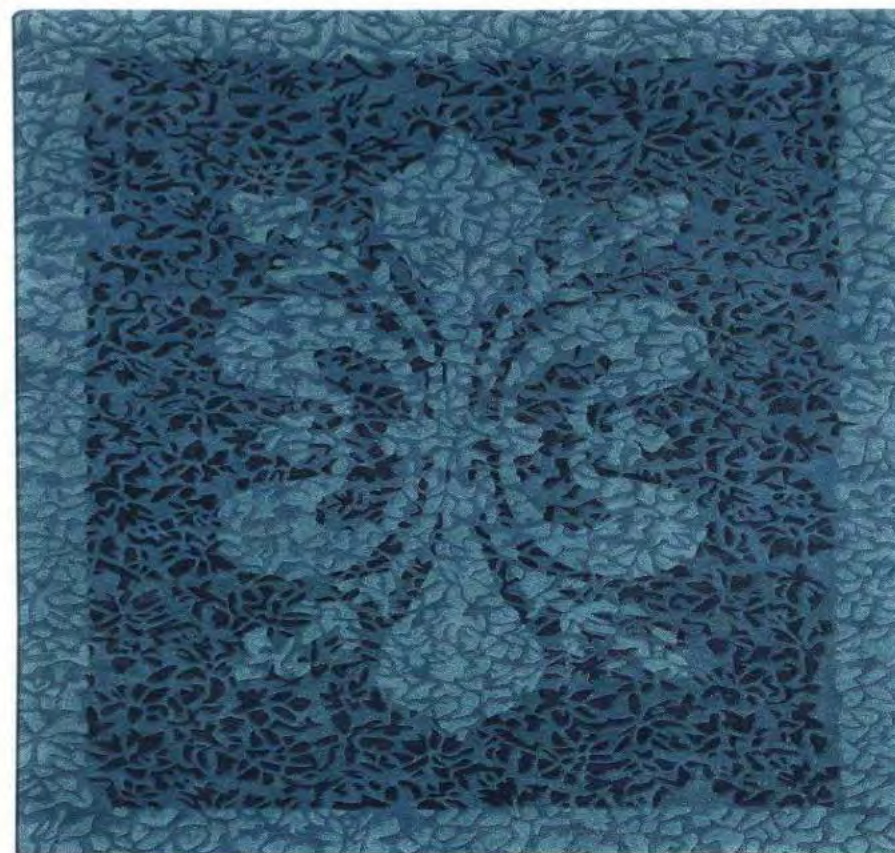
MICO # 63



MICO # 64



MICO # 65



MICO # 66



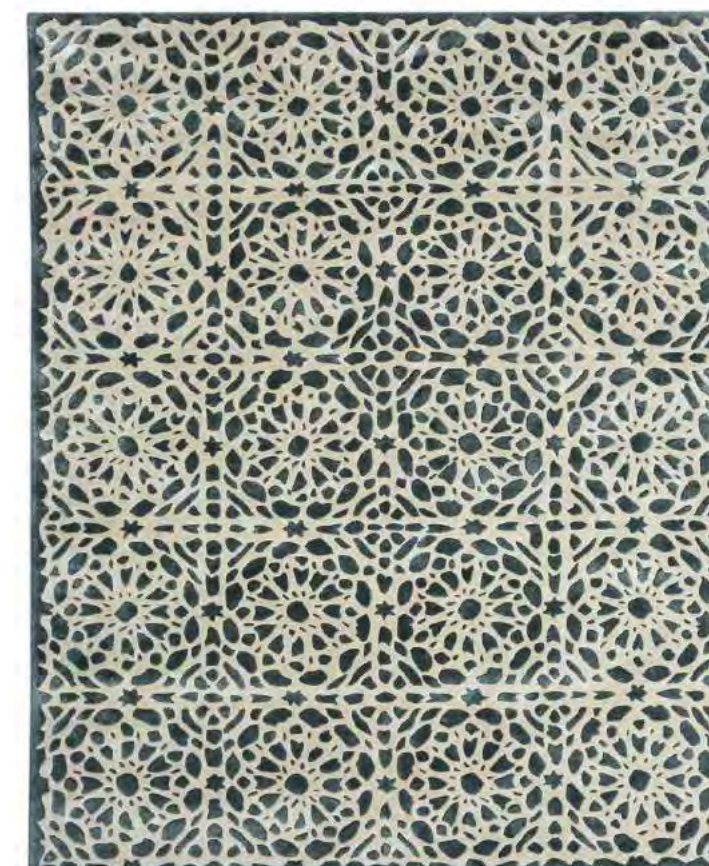
MICO # 67



MICO # 68



MICO # 69



MICO # 70



MICO # 190



MICO # 191



MICO # 192

MICO HAND KNOTTED RUGS

Hand-knotting allows us to produce very detailed designs precisely because the piece is made knot by knot. This is a very labour-intensive manual technique, which means it is also extremely flexible in terms of the patterns that can be achieved. Making the most of this unique feature, we can come up with rugs with a regular design as well as rugs with an apparently more random pattern.

Fibre composition: 100% FINE WOOL

Dimensions: 150x200 cms / 4'11"x6'7"

160x230 cms / 5'3"x7'6"

170x240 cm / 5'7"x7'11"

200x300 cm / 6'7"x9'10"



MICO # 71



MICO # 72



MICO # 73



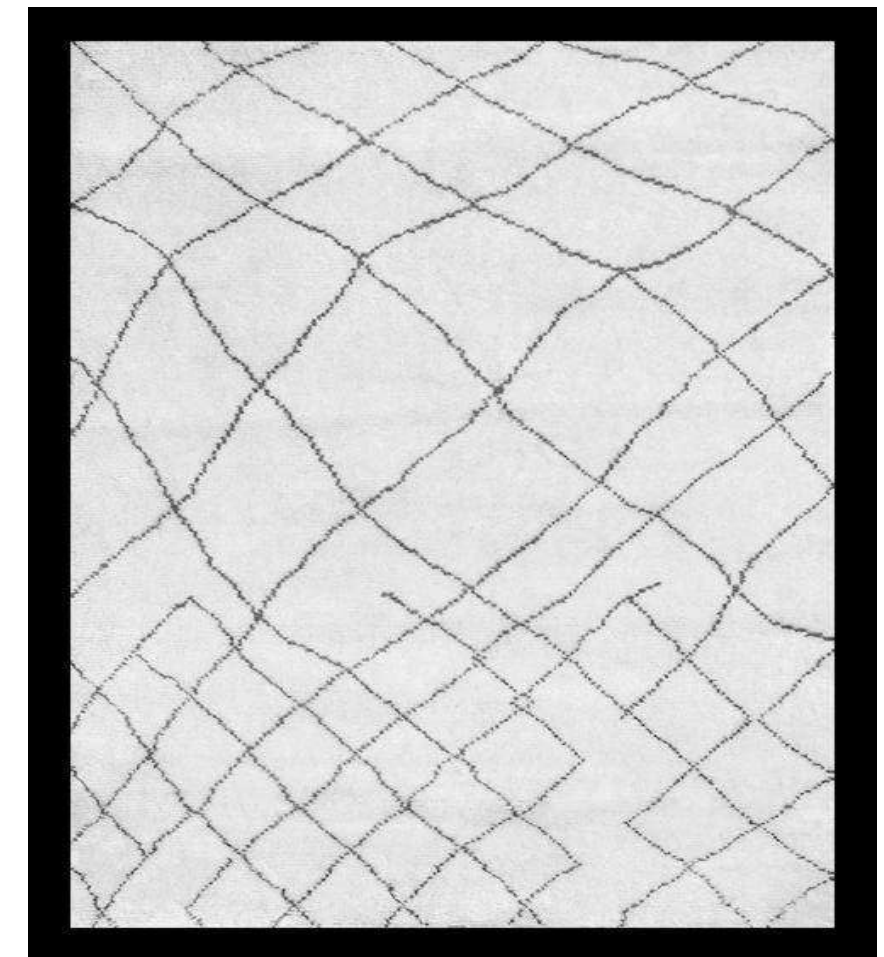
MICO # 74



MICO # 75



MICO # 76



MICO # 77



MICO # 78



MICO # 79



MICO # 80



MICO # 81



MICO # 82



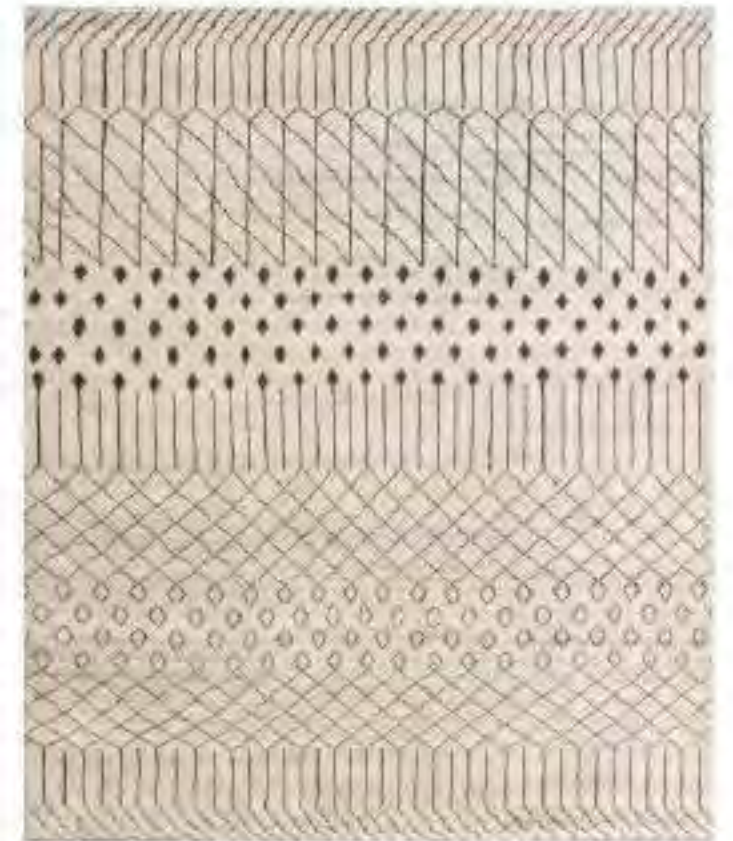
MICO # 83



MICO # 84



MICO # 85



MICO # 86



MICO # 87



MICO # 88



MICO # 89

MICO HAND TUFTED RUGS

This manual method is done on stretched cotton fabric, using a 'tufting gun', which shoots out and cuts the wool to follow the pattern design. This technique can be used to create different heights of pile, loop finishes and all sorts of designs and colours. We can use it to make the impos-sible possible.

Fibre composition: 100% FINE WOOL

Dimensions: 150x200 cms / 4'11"x6'7"

160x230 cms / 5'3"x7'6"

170x240 cm / 5'7"x7'11"

200x300 cm / 6'7"x9'10"



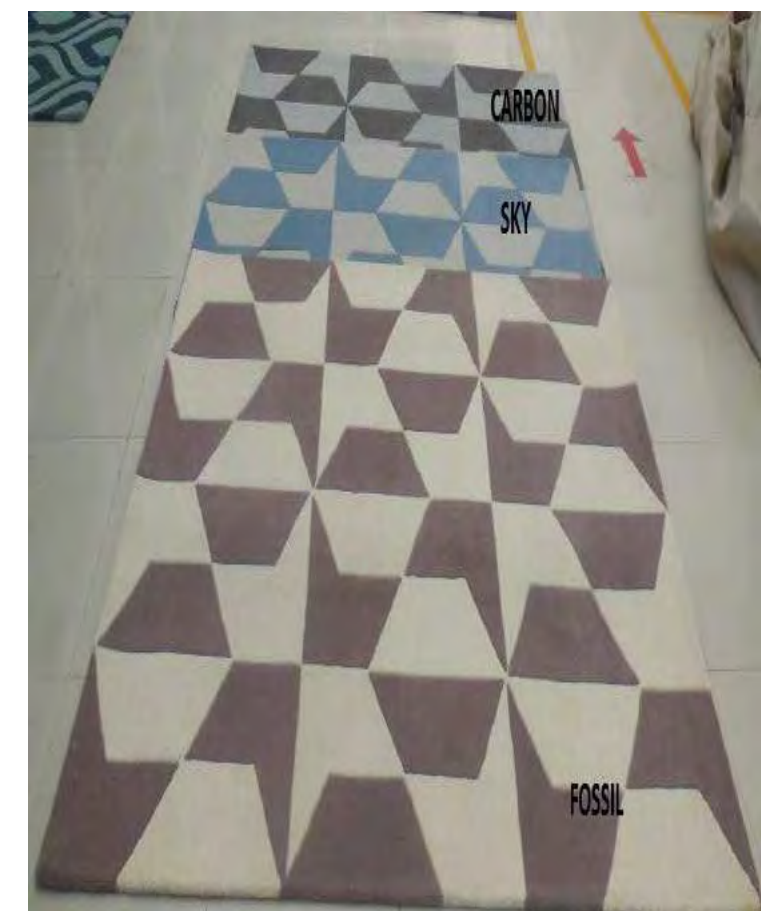
MICO # 90



MICO # 91



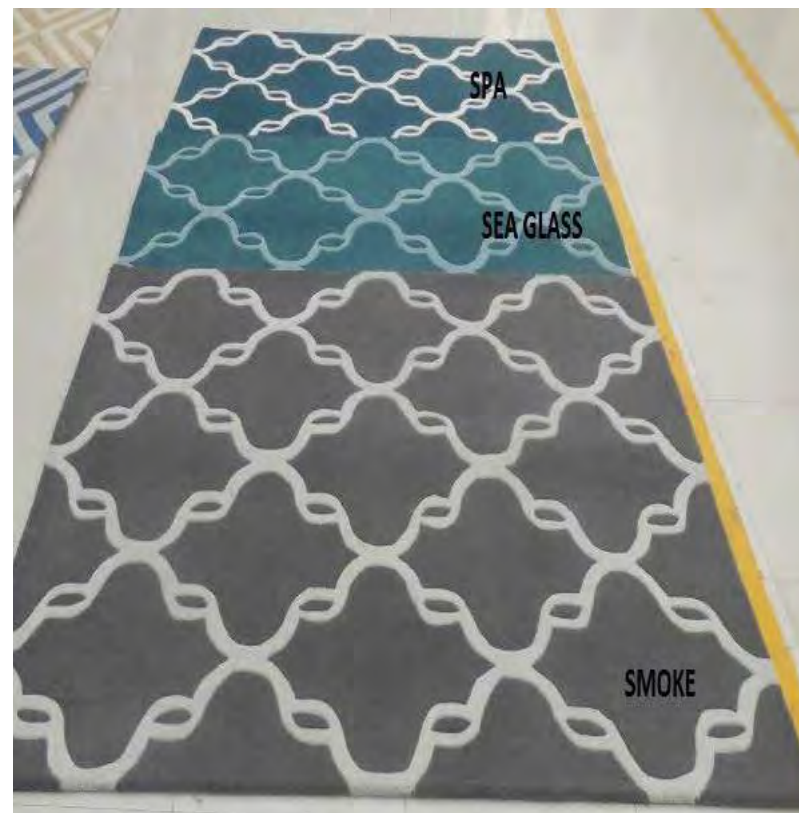
MICO # 92



MICO # 93



MICO # 94



MICO # 95



MICO # 96



MICO # 97



MICO # 98



MICO # 99

MICO HIGH END RUGS

Based on the embroidery technique, the HIGH END RUGS rein-terprets the basic rules of this craft by taking a new and very specific ap-proach, applied both to the type of stitch and to the scale of thickness of the threads. A concept expressing the very personal style. The attractive patterns on the rugs, poufs and cushions in the series are based on four different stitch lengths, hand embroidered with thick wool yarn on a PVC grid. Additionally, wooden side tables in three sizes allow you to put together some immensely versatile living spaces.

Fibre composition: 100% FINE WOOL

Dimensions: 150x200 cms / 4'11"x6'7"

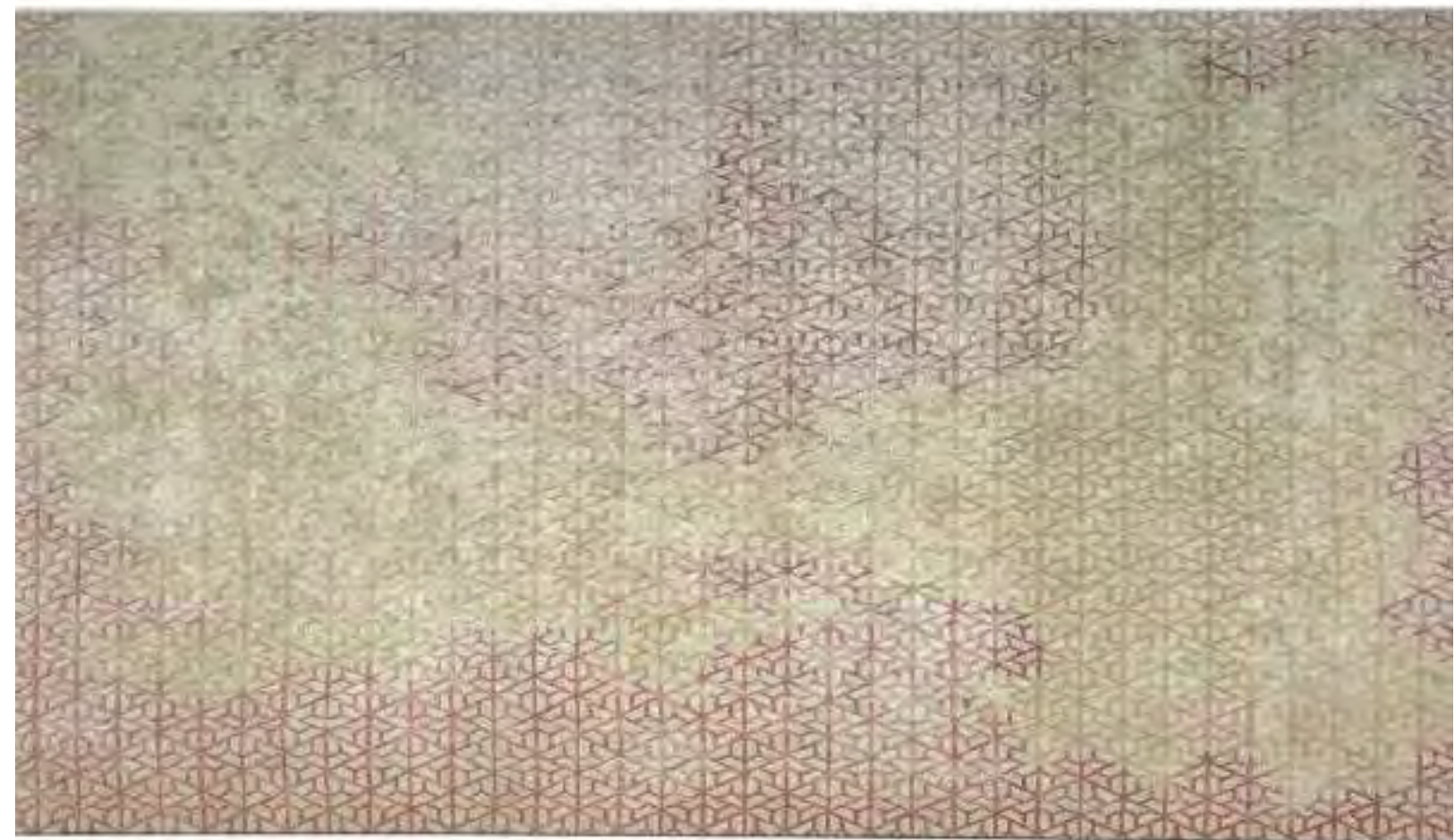
160x230 cms / 5'3"x7'6"

170x240 cm / 5'7"x7'11"

200x300 cm / 6'7"x9'10"



MICO # 100



MICO # 101

MICO

EUROPE 1 RUGS

The EUROPE 1 collection emerged from an experimental process, and its apparent simplicity hides an innovative process of producing a textile pattern. Its appearance, so familiar and recognisable, is based on interweaving two different coloured wool threads to make a single thicker yarn. Surprisingly, the use of this two-tone, thicker material on a hand loom produces surfaces that look more like a succession of knots. An ingenious piece of research work, who has produced a series of rugs, poufs and cushions finished off with some original fringes.

Fibre composition: 100% FINE WOOL

Dimensions: 150x200 cms / 4'11"x6'7"

160x230 cms / 5'3"x7'6"

170x240 cm / 5'7"x7'11"

200x300 cm / 6'7"x9'10"



MICO # 102



MICO # 103



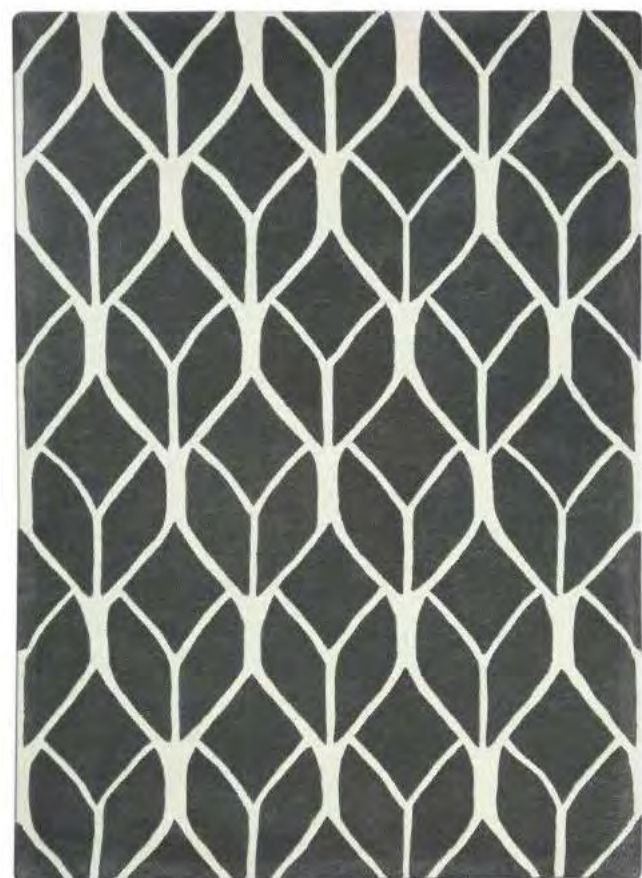
MICO # 104



MICO # 105



MICO # 106



MICO # 107



MICO # 108



MICO # 109



MICO # 110



MICO # 111



MICO # 112



MICO # 113



MICO # 114

MICO

EUROPE 2 RUGS

A completely new and unexpected approach to graphics and colour for a humble material that has traditionally been associated with rustic style décor. By applying these two variables, has come up with a collection of rugs and cushions proving the stylish potential of jute. Colour blends and drawn patterns that look as though they have been put together spontaneously and impulsively, breaking with the dull and rather crude way that jute is often used. The collection questions and surpasses this cliché, giving this material a priceless chance of becoming part of the contemporary home.

Fibre composition: 100% FINE WOOL

Dimensions: 150x200 cms / 4'11"x6'7"

160x230 cms / 5'3"x7'6"

170x240 cm / 5'7"x7'11"

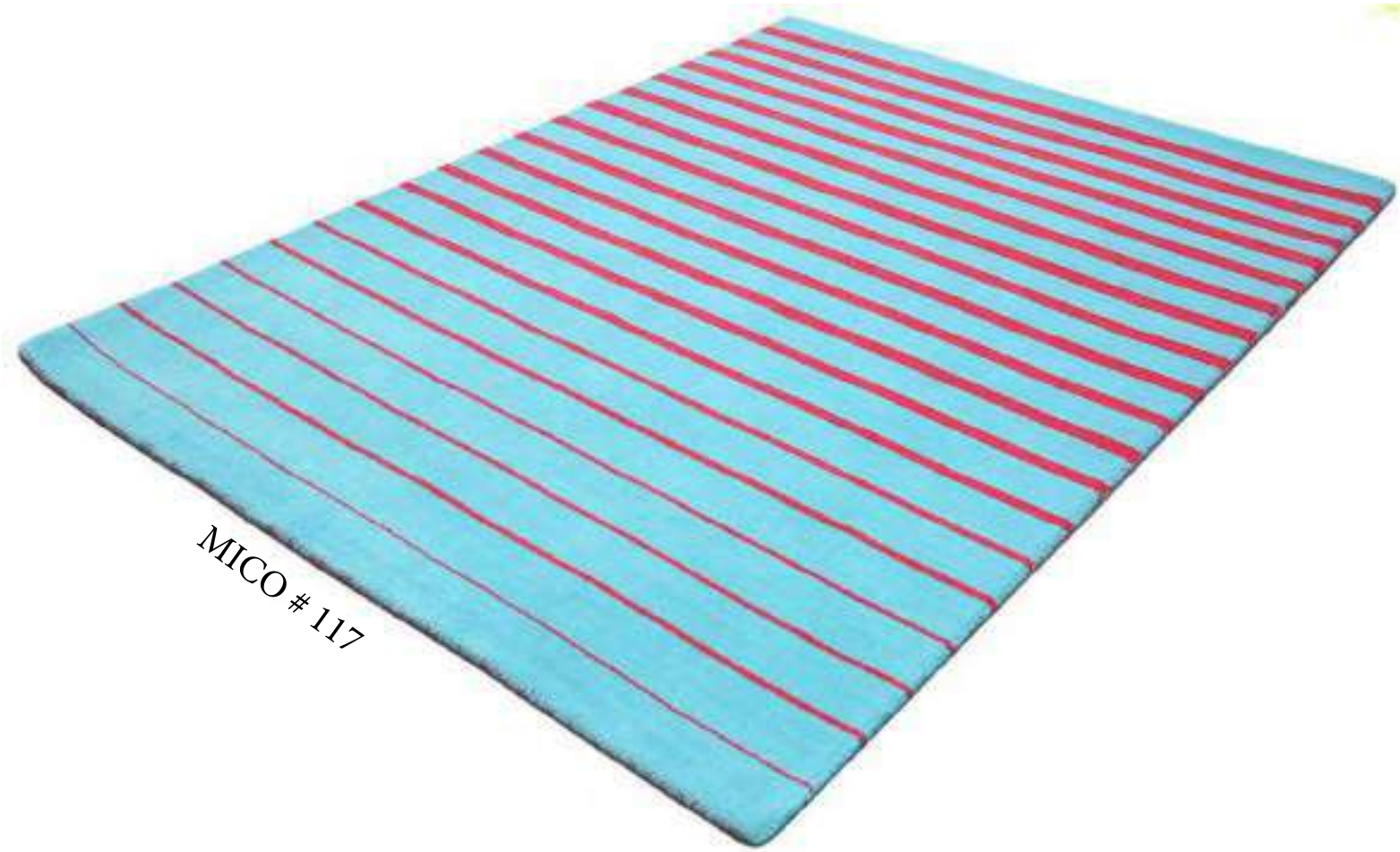
200x300 cm / 6'7"x9'10"



MICO # 115



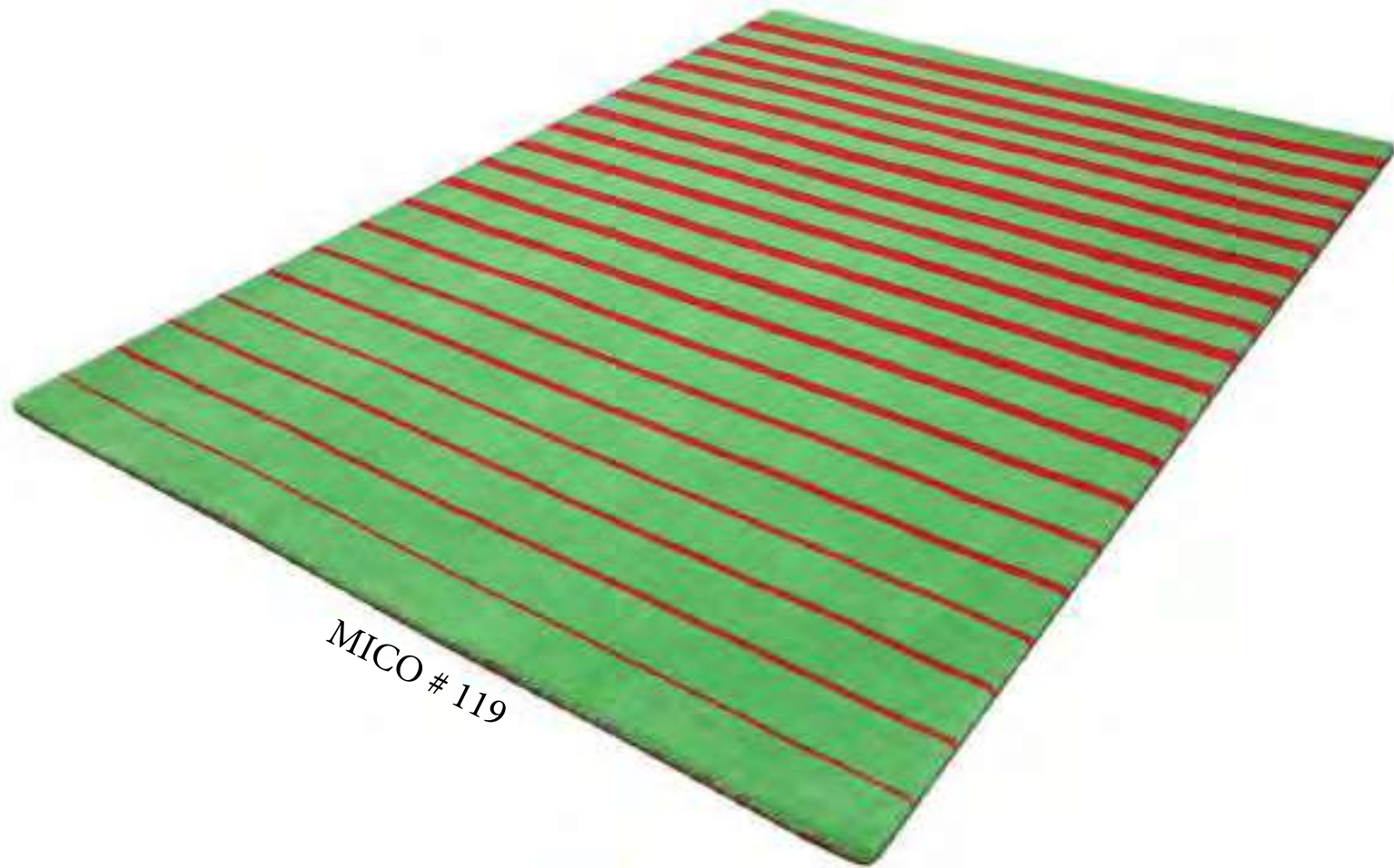
MICO # 116



MICO # 117



MICO # 118



MICO # 119



MICO # 120

MICO EUROPE 3 EMBROIDERY RUGS

With a design evoking the decorative scrolling on traditional iron railings, the decoration on these rugs from the Valentina collection is the re-sult of applying chain stitch to a cotton fabric base. A simple decorative touch that gives a hand-embroidered look to the patterns
Has used two cushions and an ethereal steel structure to also come up with an original floor-level chair for this elegant yet casual set of items.

Fibre composition: 100% FINE WOOL

Dimensions: 150x200 cms / 4'11"x6'7"

160x230 cms / 5'3"x7'6"

170x240 cm / 5'7"x7'11"

200x300 cm / 6'7"x9'10"



MICO # 125

MICO OVER TUFTING RUGS

The eye-catching visual contrast obtained by combining two textures with such different finishes, one that's smooth and plain and another that's voluminous and intricate... this is what makes the Trenzas collection so attractive. The collection was devised by the MICO team and handcrafted on manual looms. The idea was to convey a natural, bucolic feel with rustic undertones, using braids of thick wool that covers just the surface of this series of rugs, poufs and cushions in a reference to the inter-woven appearance of wild wheat ears. This is a common theme in MICO, which experiments over and over again with transferring aesthetics linked to other territories to textile products.

Fibre composition: 100% FINE WOOL

Dimensions: 150x200 cms / 4'11"x6'7"

160x230 cms / 5'3"x7'6"

170x240 cm / 5'7"x7'11"

200x300 cm / 6'7"x9'10"



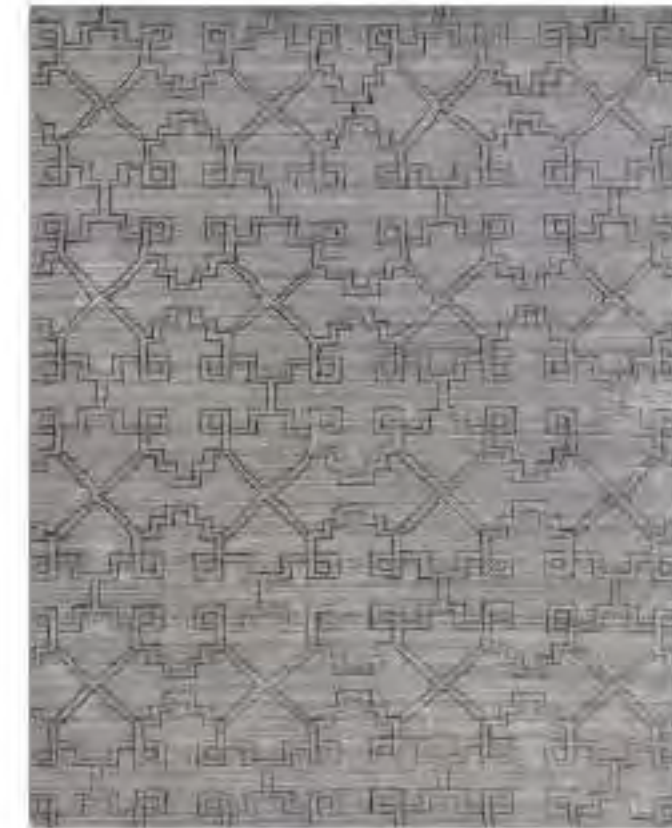
MICO # 126



MICO # 127



MICO # 128



MICO # 129



MICO # 130



MICO # 131

MICO

INDOOR/OUTDOOR PET POLYSTER RUGS

A complex technique taken to another aesthetic dimension. The collection consists of a series of designs that eclectically and harmoniously combine a varied style of patterns, made using three different systems incorporated into the Moroccan hand-crafted textile method after which the collection is named. Mixing hand-weaving, hand-knotted, and hand-embroidery, the result is a series of rugs and poufs in changing textures and sizes, with a wealth of pattern combinations inspired by the colours and topography of Africa and India.

Fibre composition: 100% FINE WOOL

Dimensions: 150x200 cms / 4'11"x6'7"

160x230 cms / 5'3"x7'6"

170x240 cm / 5'7"x7'11"

200x300 cm / 6'7"x9'10"



MICO # 132



MICO # 133



MICO # 134



MICO # 135

MICO WOOL SHAGGY

Ten designs, countless combinations. Dreamed up the Bandas collection is one of the most flexible and customisable designs MICO has come up with. Velcro strips affix these dynamic and colourfully embroidered pieces either to poufs or to each other to make floor tapestries. The collection combines two types of textiles and techniques: a fine fabric produced on a hand loom, used for covering poufs and as a basis for the rugs themselves, on which the design is hand-embroidered using two thick-nesses of wool yarn.

Fibre composition: 100% FINE WOOL

Dimensions: 150x200 cms / 4'11"x6'7"

160x230 cms / 5'3"x7'6"

170x240 cm / 5'7"x7'11"

200x300 cm / 6'7"x9'10"



MICO # 138



MICO # 139



MICO # 140

MICO WOOL & VISCOSE RUGS

By teasing, steaming and pressing wool, you get felt, a compact material that doesn't come from a weaving process and that, in our experience, offers inexhaustible design possibilities as it can be cut and stamped, stitched or embroidered, braided and moulded. That's why we regard it as an indispensable part of contemporary design.

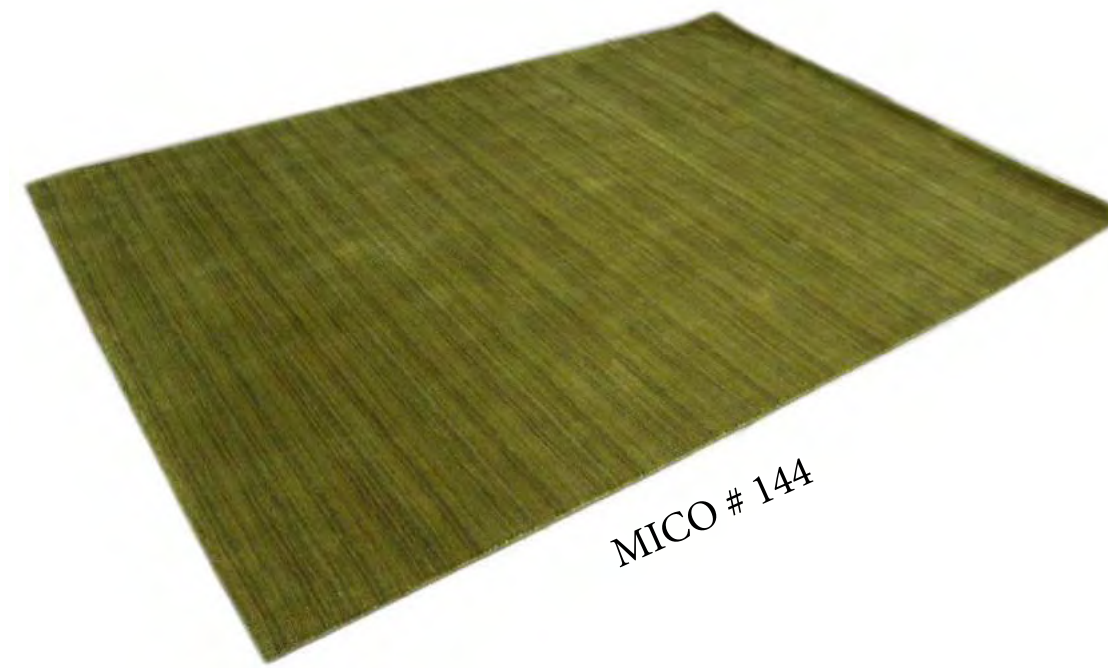
Fibre composition: 100% WOOL / VISCOSE

Dimensions: 150x200 cms / 4'11"x6'7"

160x230 cms / 5'3"x7'6"

170x240 cm / 5'7"x7'11"

200x300 cm / 6'7"x9'10"



MICO #144



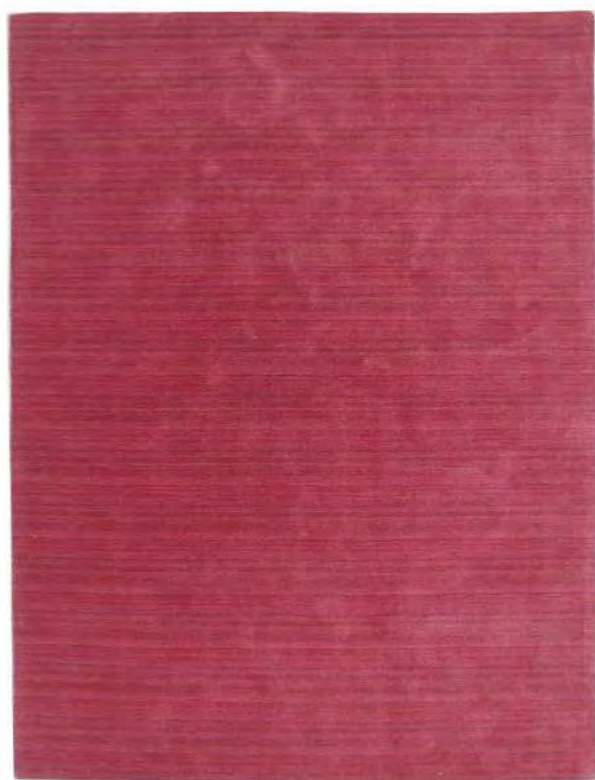
MICO #145



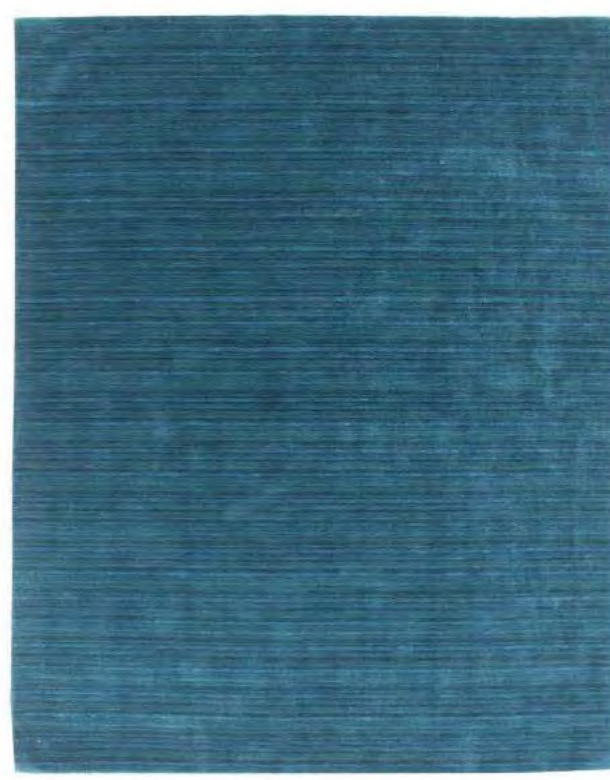
MICO #146



MICO #147



MICO # 148



MICO # 149



MICO # 150



MICO # 151



MICO # 152

MICO VISCOSE PRINTING RUGS

Kilims/RUGS are produced by a hand-craft-ed method using only threads, tightly interweaving the warp and weft strands of the weave on a manual loom to produce a flat surface with no knots. The result is a lightweight fabric with no pile, similar to that of tapestries, enabling all manner of patterns and designs to be created.

Fibre composition: 100% WOOL / VISCOSE

Dimensions: 150x200 cms / 4'11"x6'7"

160x230 cms / 5'3"x7'6"

170x240 cm / 5'7"x7'11"

200x300 cm / 6'7"x9'10"



MICO # 153



MICO # 154



MICO # 155



MICO # 156



MICO # 157



MICO # 158



MICO # 159



MICO # 160



MICO # 161



MICO # 162



MICO # 163

MICO

CUSHION EMBROIDERY

With a design evoking the decorative scrolling on traditional iron railings, the decoration on these rugs and armchairs from the Valentina collection is the re-sult of applying chain stitch to a cotton fabric base. A simple decorative touch that gives a hand-embroidered look to the patterns has used two cushions and an ethereal steel structure to also come up with an original floor-level chair for this elegant yet casual set of items.

Fibre composition: 100% FINE WOOL/COTTON

Dimensions: 150x200 cms / 4'11"x6'7"

160x230 cms / 5'3"x7'6"

170x240 cm / 5'7"x7'11"

200x300 cm / 6'7"x9'10"



MICO # 241



MICO # 242



MICO # 243



MICO # 244



MICO # 245



MICO # 246



MICO # 247



MICO # 248



MICO # 249



MICO # 250



MICO # 251



MICO # 252



MICO # 253



MICO # 254



MICO # 255



MICO # 256



MICO # 257



MICO # 258



MICO # 259



MICO # 260



MICO # 261



MICO # 262



MICO # 263



MICO # 264



MICO # 265



MICO # 266



MICO # 267



MICO # 268



MICO # 269



MICO # 270



MICO # 271



MICO # 272



MICO # 273



MICO # 274



MICO # 275



MICO # 276

MICO POLYESTER RUGS

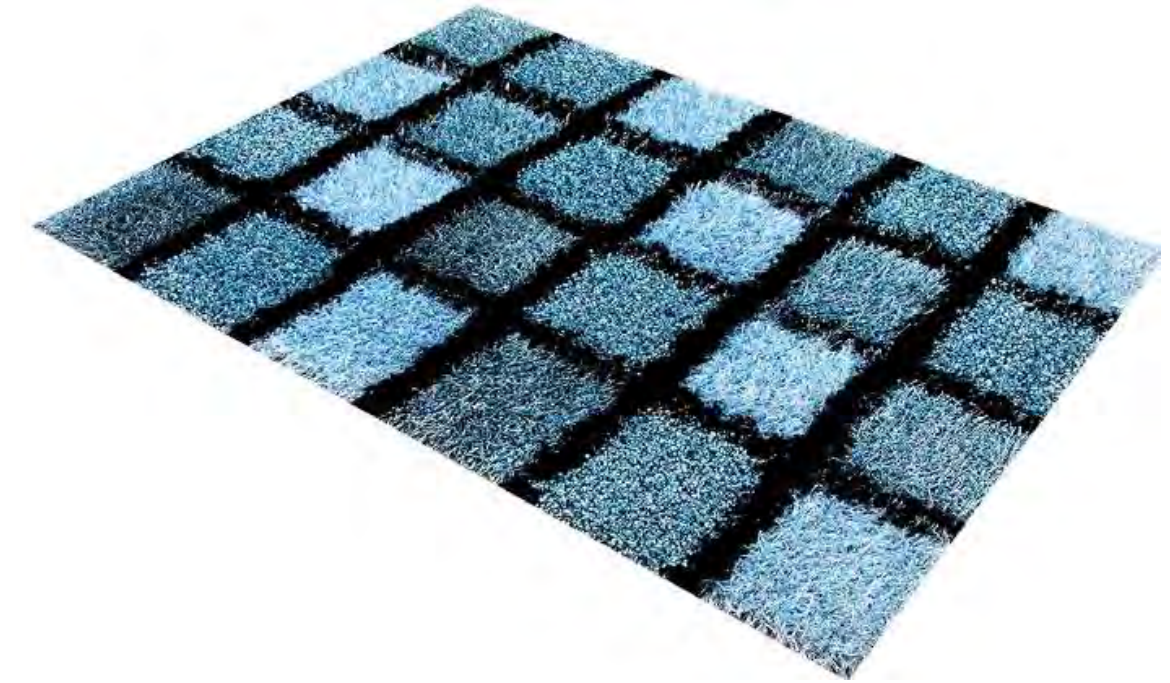
Painstakingly built collections based on innovative concepts and hand-crafted production methods. A range of fabulous designs which, starting with a rug, can be used to build up a whole family of mod-ules and accessories for any room. This is Mico Polyester Rugs : designs created for com-ing up with stimulating atmospheres with contemporary flair, in an open, flexible, informal layout in 3D designs too.

Fibre composition: 70% Polyester/30% Cotton

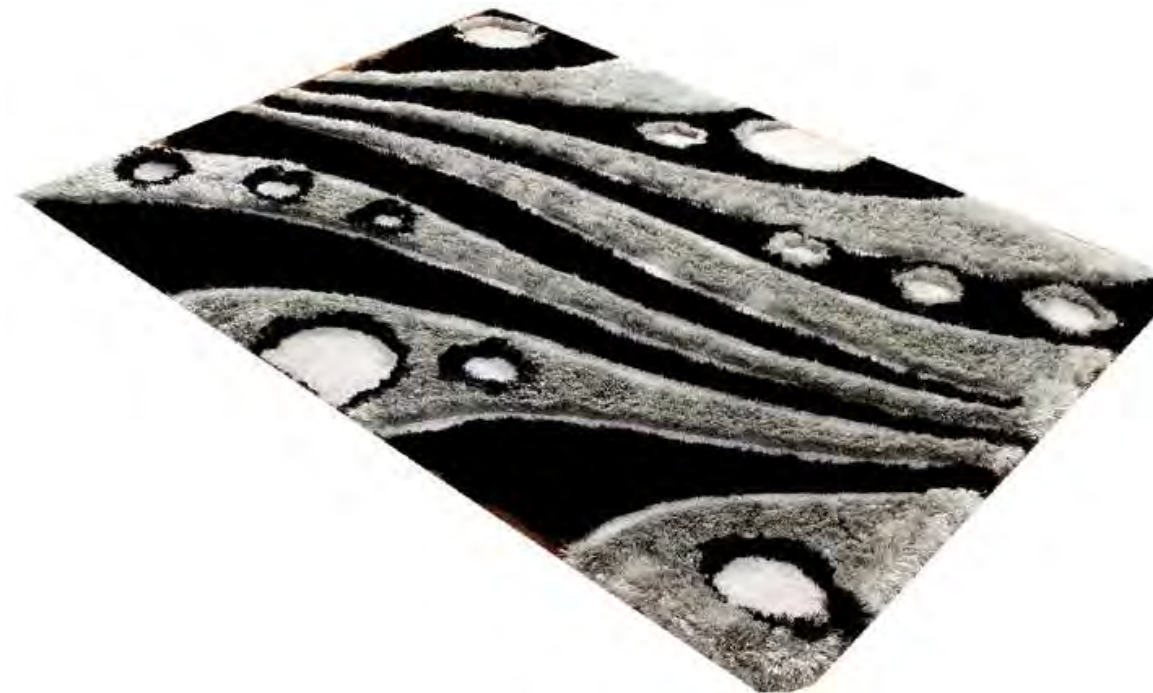
Dimensions: 150x200 cms / 4'11"x6'7"
160x230 cms / 5'3"x7'6"
170x240 cm / 5'7"x7'11"
200x300 cm / 6'7"x9'10"



MICO # 193



MICO # 194



MICO # 195



MICO # 196



MICO # 197



MICO # 198



MICO # 199



MICO # 200



MICO # 201



MICO # 202



MICO # 203



MICO # 204



MICO # 205



MICO # 206



MICO # 207



MICO # 208



MICO # 209



MICO # 210



MICO # 211



MICO # 212



MICO # 213



MICO # 214



MICO # 215



MICO # 216



MICO # 217



MICO # 218



MICO # 219



MICO # 220



MICO # 221



MICO # 222



MICO # 223



MICO # 224



MICO # 225



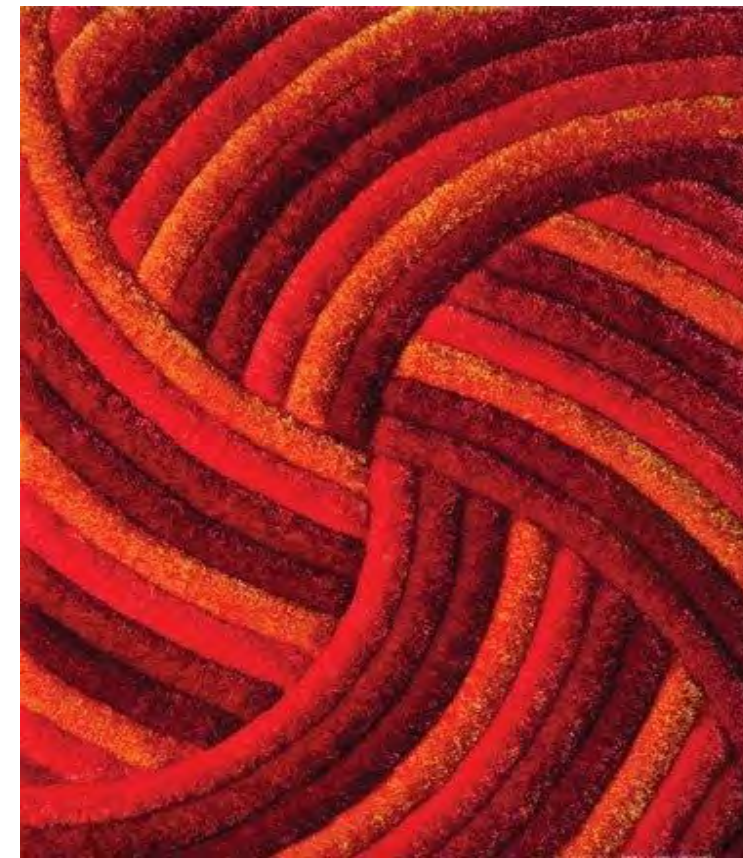
MICO # 226



MICO # 227



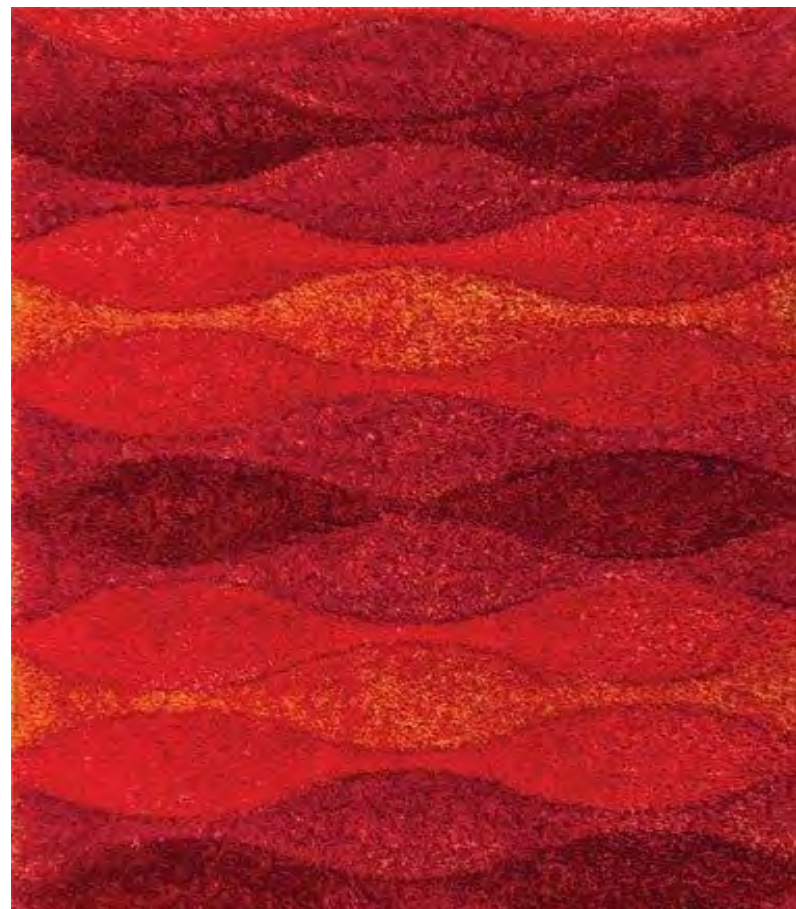
MICO # 228



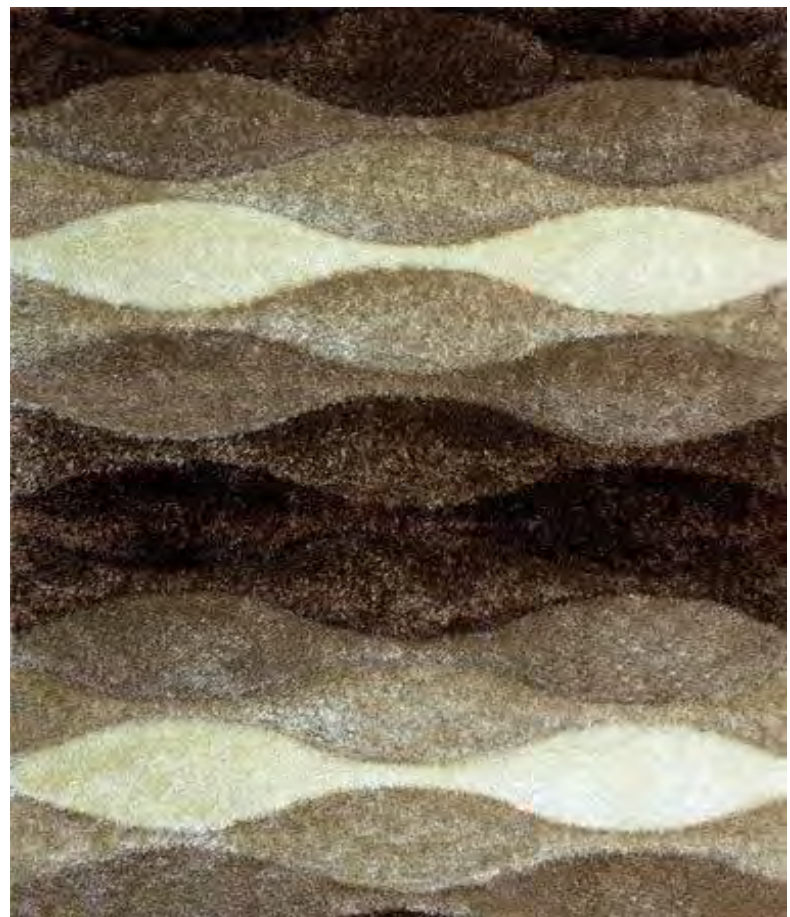
MICO # 229



MICO # 230



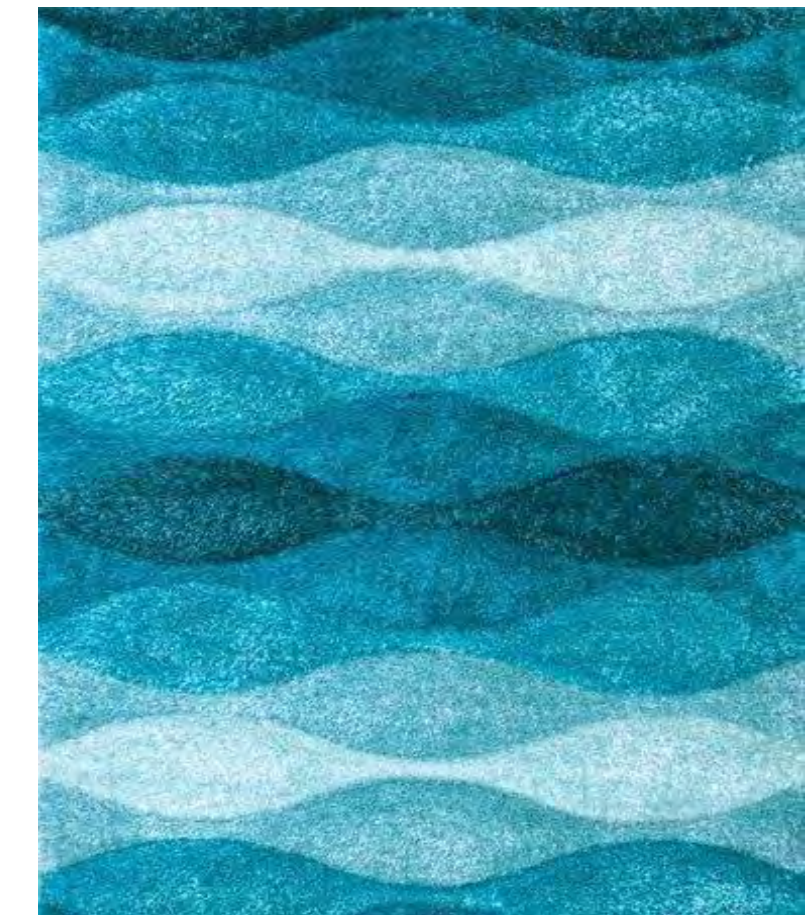
MICO # 231



MICO # 232



MICO # 233



MICO # 234



MICO # 235



MICO # 236



MICO # 237



MICO # 238



MICO # 239



MICO # 240

PROJECTS

HOSPITALITY

As the hospitality industry adjusts to today's desire for height-ened experiences, traditional designs and amenities that are big on expansive and nondescript spaces are giving way to more informal spaces that foster familiarity, closeness, and conversation. MICO spaces and rugs bring that feeling of home to hospitality spaces around the world, providing comfort and unique character to lobbies, cafes, meeting rooms and more. The trend for places that are local, personal and feel like home is here to stay.



CONTRACT

Office design has moved beyond the cold minimalism and austerity of yesteryear. Nowadays offices are conceived to provide the same comfort level we can find at home, creating warm and welcoming environments that foster creativity, and emphasizing the unique culture of each company. For these new spaces open, flexible and conducive to teamwork MICO spaces and rugs take on a more important role and help to communicate a work culture in a more user friendly setting.



RESIDENTIAL

MICO makes homes more livable. Contemporary trends are eclectic, and rooms tend to combine different styles and tell stories of our travels, our family and friends. MICO rugs and spaces capture attention and help define the areas around which furniture is organized, providing functionality and structure to the home. Their wide color palette and motifs help unify the diverse combination of materials and furnishings.



Every year Mico take on new collections as we take on new challenges. True to our essence, we continue to improve traditional manufacturing techniques and introducing new capabilities that allow handmade rugs to evolve. Our close collaboration with designers and artisans and our experience developing our products make it possible. With an eye on sustainability in all stages involved, we are, little by little, able to achieve a production process that evolves to benefit all.

MICO products are hand-made of 100% natural fibers. In order to guarantee a long lifespan, they require certain regular care and cleaning.

MAINTENANCE TIPS

All carpets, when new, form and release “fuzz” during the first few months. To remove it, we recommend you brush them gently with a soft bristle brush in the direction of the pile; and then use your vacuum cleaner, with wheels in the nozzle in the same direction.

If threads protrude from the surface of the rug, do not pull them. Simply cut them so that they are flush with the rest of the pile.

Because natural dyes are used to colour the fibres, do not wet your rug, since certain colours may run. That is why we do not recommend that you use water/air vacuum cleaners.

Do not expose your rug to the sun for long periods, as they may fade

To spread wear evenly across the entire surface, we recommended you change the orientation of the carpet 2 or 3 times a year.

To store carpets until the following season, roll them up when they are clean and fully dry, ensuring there are no wrinkles, and store them in a clean, dry place.

GENERAL CLEANING TREATMENTS

If the carpet is stained, you must act as quickly as possible to prevent impregnation of the fabric or design. These are our general cleaning guidelines:

- Clean from the external border toward the centre to avoid propagating the stain.
- Press gently to avoid damaging the carpet pile.
- If you spill something on the carpet, always use kitchen roll or a clean white cloth to mop it up.
- Test out any new products on a corner of the rug.
- Only use very small amounts of cleaning products to avoid your rug from getting wet.
- Always dry horizontally on a towel or a dryer.

In general, depending on the type of stain, we recommend:

For stains caused by solid substances or dust:

- Must be scratched off carefully with the tip of a knife or spoon.
- Shake and carefully brush the rug to remove any dirt or debris.

For stains caused by liquid substances:

- Immediately absorb any excess liquid using a paper towel.

Always read and carefully follow the specific cleaning recommendation for each rug.

SPECIFIC CLEANING INSTRUCTIONS

Certain types of stains penetrate the fibres more quickly, which makes them more difficult to remove. Depending on the type of stain and fibre that your rug is made from, the following are recommended cleaning treatments:

Mud or general dirt stains	
Wool, felt	Ammonia (1 part) + Warm water (3 parts)
Jute, other fibers	Salt + Warm water
<ol style="list-style-type: none"> 1. Allow the stain to dry 2. Dry brush and vacuum 3. Apply the solution with a sponge or a damp cloth 4. Clean with a clean cloth 5. Dry with kitchen towel or a clean white cloth, or vacuum 	

Coffee, wine, chocolate, food in general, blood or urine and faeces stains	
Wool, felt	Natural detergent + Vinegar + Warm water
Jute, other fibers	Natural detergent + Warm water
<ol style="list-style-type: none"> 1. Absorb residue with kitchen towel or a cloth, and vacuum 2. Apply the solution with a damp sponge and rub 3. Rinse with warm water and damp white cloth 4. Dry with kitchen towel or a clean white cloth, or vacuum 	

* Natural detergent: Neutral soap with diluted in water.

PROFESIONAL CLEANING

If there is a stain or another type of mark that you cannot remove by the following these instructions, or if the rug is in a public area and exposed to heavy traffic, you should use a specialist cleaning service.

If you take the rug to the dry cleaners, it is important to show the professional cleaner the label with the cleaning instructions for your rug, and the respective cleaning guidelines.

It is very important to remind the professional cleaner that cotton-backed rugs must not be dry cleaned, since the chlorinated solvents used in this process break down and dissolve the layer of latex adhered to the back of the carpet, that may interfere with the texture and the structure of your rug.

REMARKS

Natural fibers products may loose fluff during the first few months. This is a normal feature of wool and is in no case sign of deficient quality.

Handmade products present small variations across the products in weight, colour and size with respect to the original model. This is not a fault, but part of the process of a handmade artisan product.

The maximum variation is 5% of the total. The variations in measurement may affect both the width and the length of the rug.

We accept no liability for imperfections caused by misuse or undue treatment of the products (washing, ripping, stains, etc). We only accept returns due to manufacturing faults.

The colours of the products shown in this catalogue may be slightly different to the real ones due to the paper printing process.



Mico India Group

MICO INDIA

78, NIZATAM NAGAR
JALANDHAR-144002 PUNJAB (INDIA)
CELL :- +91-9814094647
TEL :- +91-181-5083920,+91-181-5012920
EMAIL:- micocarpets@gmail.com
WEBSITE:- www.micoindia.com

